

MONTHLY MEMBERSHIP PROGRESS REPORT

LOCATION CROATIA

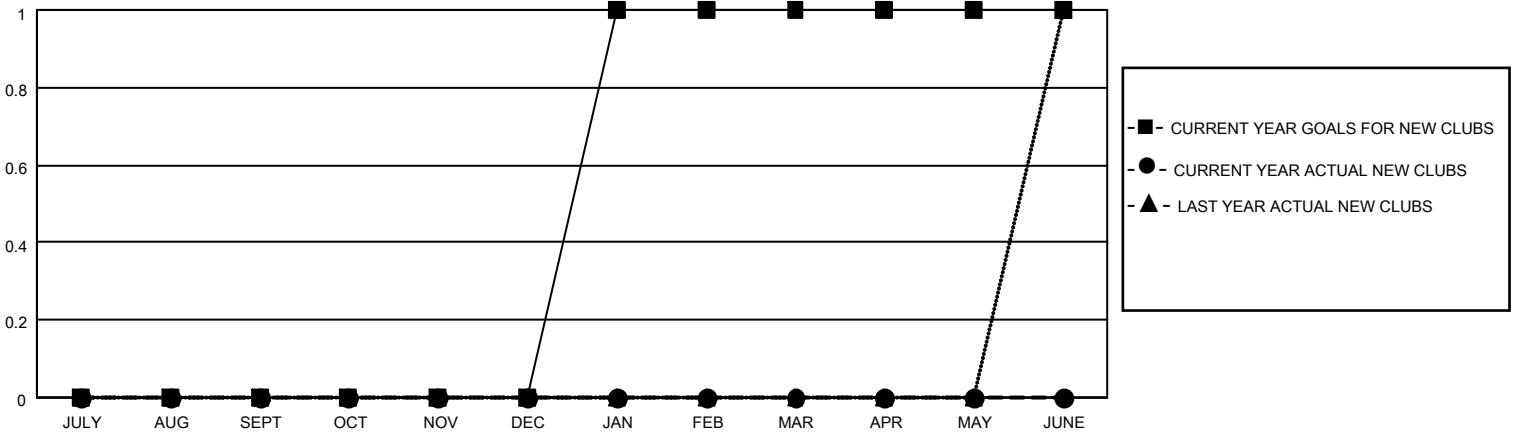
District 126

Results as of: 5/31/2022

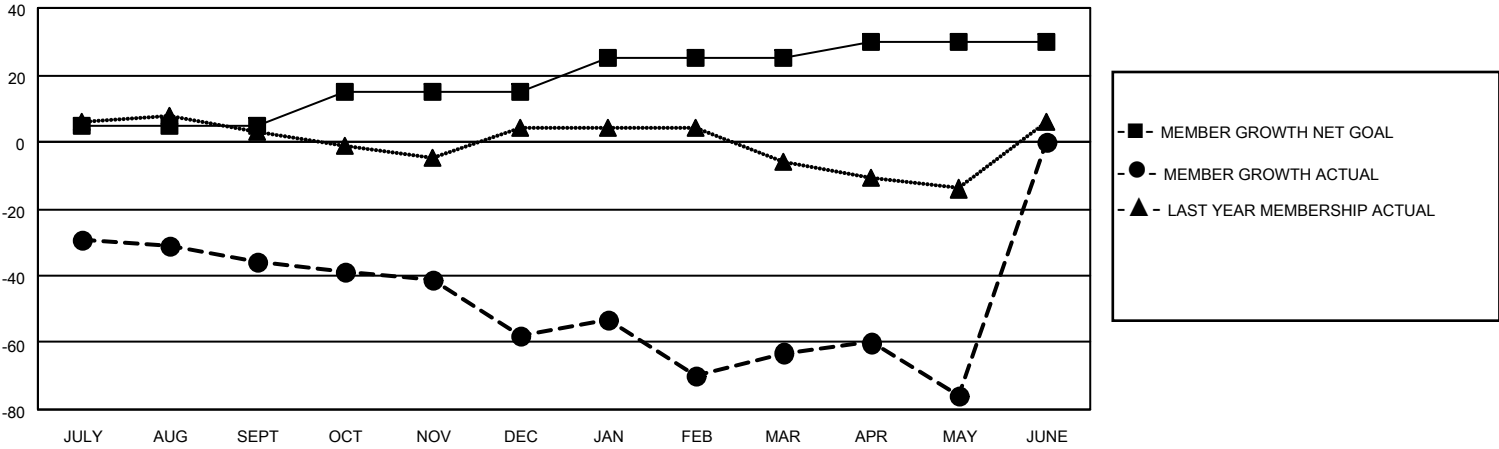
Clubs			
RESULTS FOR 2021-2022			
QUARTER	NEW CLUB GOAL	NEW CLUBS	DROPPED CLUBS
JULY/AUG/SEPT	0	0	0
OCT/NOV/DEC	0	0	3
JAN/FEB/MAR	1	0	1
APR/MAY/JUNE	0	0	0

Members			
RESULTS FOR 2021-2022			
QUARTER	MEMBER GROWTH NET GOAL	MEMBER GROWTH ACTUAL	DROPPED MEMBERS ACTUAL (including transfers)
JULY/AUG/SEPT	5	2	38
OCT/NOV/DEC	10	6	28
JAN/FEB/MAR	10	34	26
APR/MAY/JUNE	5	19	30

GOALS AND ACTUAL NEW CLUBS CUMULATIVE



GOALS AND ACTUAL MEMBERS CUMULATIVE



DROPPED CLUBS: 4	
DROPPED MEMBERS	
DECEASED	5
CLUB CANCELLED	23
OTHER	94
TOTAL	122

19 CLUBS OF 60 ADDED 1 OR MORE NEW MEMBERS

[CLICK HERE FOR CUMULATIVE MEMBERSHIP DATA](#)

<u>GENDER DISTRIBUTION</u>	
MALE	524 (44.71%)
FEMALE	647 (55.20%)
NON BINARY	0 (0.00%)
PREFER NOT TO ANSWER	1 (0.09%)
TOTAL FAMILY UNIT MEMBERS	27
FAMILY MEMBERS PAYING HALF DUES	14